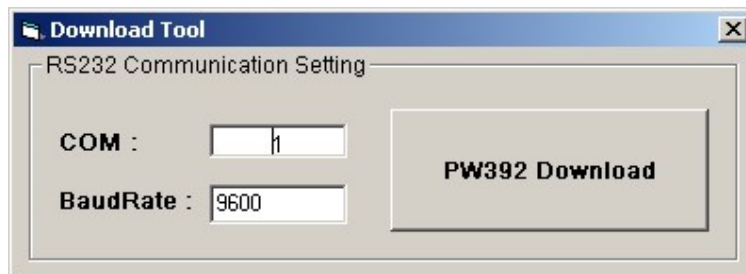


## SP8600 Firmware Upgrade Procedure

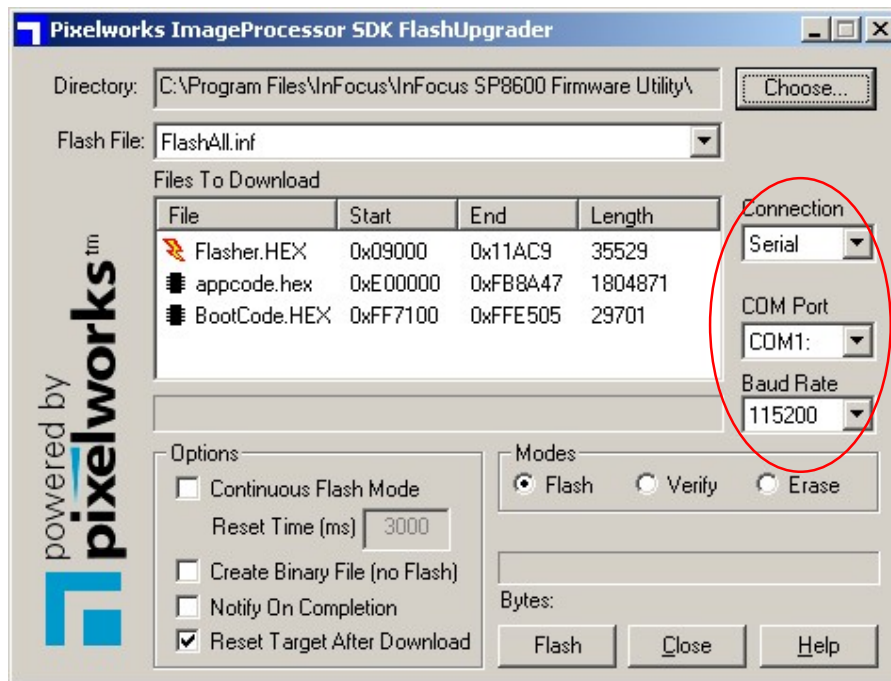
**Step 1.** Plug a power cord from power to the projector.

**Step 2.** Connect a null Modem DB9 cable to the Projector and from the PC.

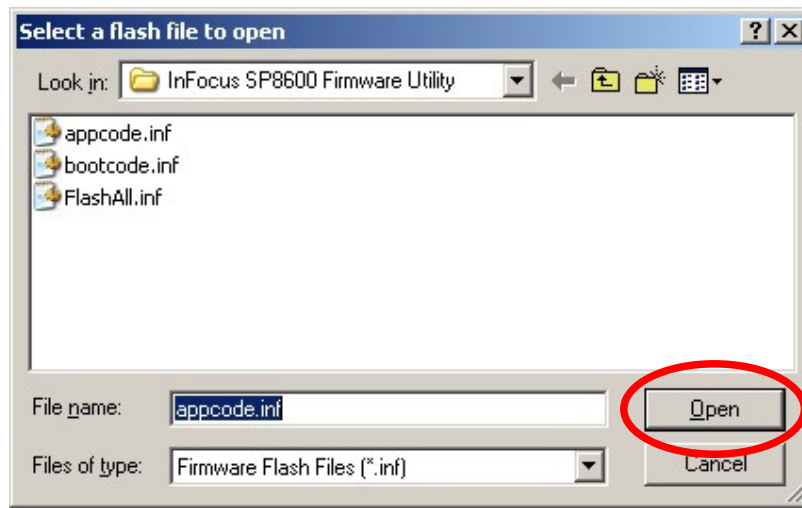
**Step 3.** Run the download tool SP8600\_versionXXXXX.exe.



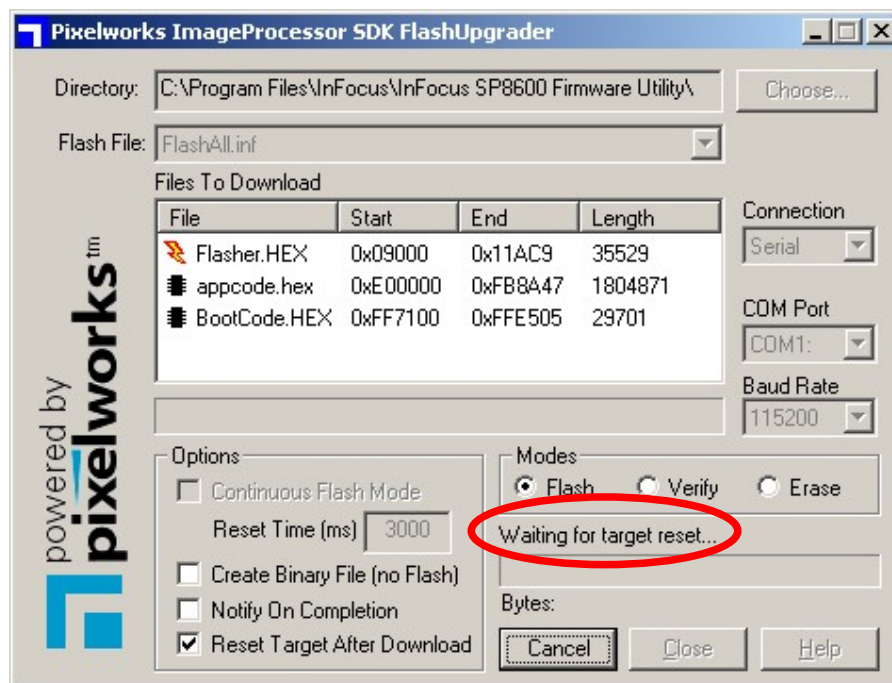
**Step 4.** Click "PW392 Download", the Pixelworks FlashUpgrader will open. Make sure that Connection, COM Port, Baud Rate and Modes are set correctly.



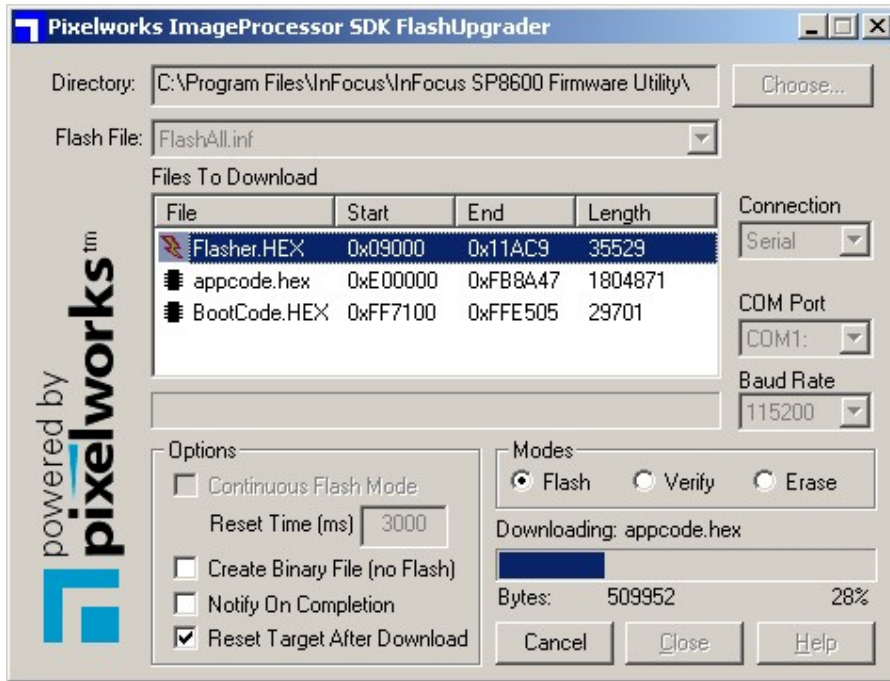
**Step 5.** Click on “Choose” to select the flash file, FlashAll.inf.



**Step 6.** Click on “Flash”, the upgrader will wait for the projector to start.



**Step 7.** Turn on the projector with the remote or the rear panel switch. The flash progress will be displayed.



**Step 8.** The FlashUpgrader will return to the original window when the flash process is complete.

